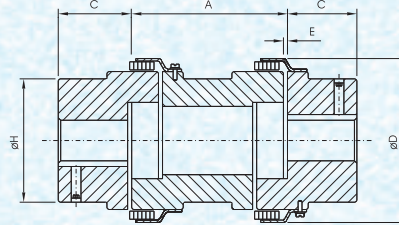


Two Snap-Wraps with Spacer



Special Features of 'UWS' Type Couplings :

- Specially designed for machines requiring space for maintenance
- Only Screw Driver is required to dismantle coupling for Maintenance / inspection.
- Very low down time.
- Having 2 snap-wrap elastomers means double flexibility.
- Floating aluminum spacer. Light weight.

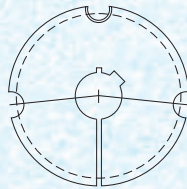
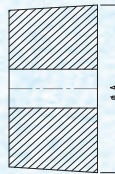
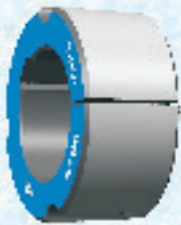
Technical Data

SIZE	DIMENSIONS IN MM								KW Capacity			TORSIONAL STIFFNESS Nm / Radian
	MINIMUM BORE	MAXIMUM BORE	RATED TORQUE NM	SPACER LENGTH DISTANCE BETWEEN SHAFT ENDS (DBSE) A	ADAPTOR OD ØH	SPACER OD ØD	ADAPTOR BODY LENGTH C	GAP E	RATING 100 KW RPM	RATING 1500 KW RPM	RATING 3000 KW RPM	
UWS - 095	10	28	21.1	90,100, 135,140,180	49	64	25	2	0.22	3.3	6.6	275
UWS - 100	10	35	46.4		57	78	35	2	0.49	7.35	14.7	688
UWS - 110	15	42	89		76	96	43	3	0.93	13.95	27.9	1719
UWS - 150	15	48	141		80	111	45	3	1.49	22.35	44.7	2120
UWS - 190	20	60	190		102	130	54	3	2.01	30.15	60.3	3495
UWS - 225	20	65	265		111	142	64	3	2.76	41.4	82.8	4584
UWS - 226	25	70	327		115	153	70	3	3.43	51.45	102.9	6990

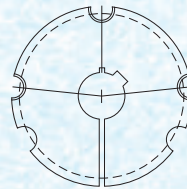
* Elastomeric member like polyurethane available on request for higher durability.

** Maximum permissible Mis-alignments : Angular 2°, parallel 0.8 mm and axial 3 mm (Initial alignment must be 25% of maximum)

Taper Bushes



SIZE 1008 UPTO 3030



SIZE 3525 UPTO 5050

Special Features of 'Taper Bushes' :

- Interchangeable
- Wide Range Of Bores
- Bore Size May Be Changed In Minutes
- Easy Fixing And Removal
- Clean Flush Appearance

SIZE	DIEMISIONS IN MM			WEIGHT IN KG
	MINIMUM BORE	MAXIMUM BORE	A	
1008	9	25	35	0.15
1108	9	28	38	0.18
1210	11	32	47.5	0.20
1215	11	32	48	0.40
1610	14	42	57	0.40
1615	14	42	57	0.60
2012	14	50	70	0.80
2017	14	50	70	1.20
2517	16	60	85.5	1.70
2525	16	60	86	2.10

SIZE	DIEMISIONS IN MM			WEIGHT IN KG
	MINIMUM BORE	MAXIMUM BORE	A	
3020	25	75	108	2.80
3030	35	76	108	4.00
3525	35	100	127	5.00
3535	35	90	127	6.50
4030	40	115	146	7.40
4040	40	100	146	10.10
4535	55	125	162	13.20
4545	55	110	162	13.20
5040	70	125	177.5	15.20
5050	70	125	178	15.20