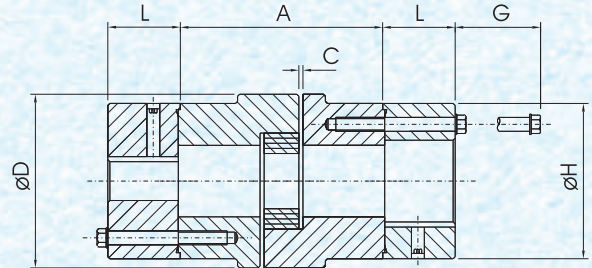


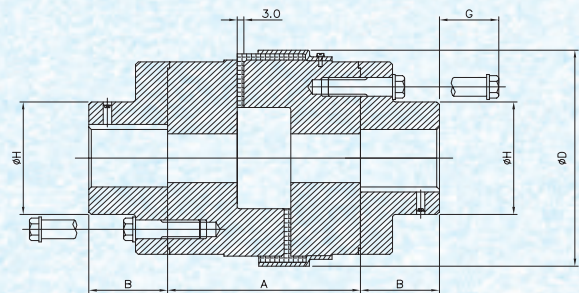
## Spider & Spacer Type - USS



### Special Features of 'USS' & 'UCWS' Type Coupling :

- Specially designed for "back pull out pumps"
- Without disturbing the pump alignment & piping etc, maintenance is possible. Can also be used where disconnection of drive and driven units is required like compressors, generators, blowers etc.
- In UCWS Couplings, individual free load T Cushion held in position by outer collar. Can also be supplied with snap-wrap type elastomers for USS Coupling. Spiders, Snap-wraps and T Cushion of polyurethane available on request.
- T Cushions, Snap Wraps can be easily inspected / changed easily.
- Range upto 4308 Nm torque ratings

## T Cushion & Spacer Type - UCWS



### Technical Data

SIZE	DIMENSIONS IN MM							C	RATING 100 RPM KW	RATING 1500 RPM KW	RATING 3000 RPM KW	RATED TORQUE Nm	TORSIONAL STIFFNESS Nm / Radian
	MINIMUM BORE	MAXIMUM BORE	SPACER LENGTH DISTANCE BETWEEN SHAFT ENDS (DBSE) A	SPACER OD ØD	ADAPTOR BODY LENGTH B	ADAPTOR BODY OD ØH	G						
USS 095	10	30	90, 100, 135, 140	54	25	54	20	2	0.220	3.30	6.60	21.10	275
USS 100	10	38		65	30	65	20	2	0.490	7.35	14.70	46.40	688
USS 110	15	42	90, 100, 135, 140, 180	85	35	76	21	3	0.930	13.95	27.90	89.00	1719
USS 150	15	48		96	40	90	27	3	1.490	22.35	44.70	141.00	2120
USS 190	20	55		115	46	102	27	3	2.010	30.15	60.30	190.00	3495
USS 225	20	65		127	52	115	31	3	2.760	41.40	82.80	265.00	4584
UCWS 226	25	70		141.5	50	134	40	3	3.430	51.45	102.90	324.00	6990
UCWS 276	25	75	161.5	60	135	40	3	5.600	84.00	168.00	532.00	12720	
UCWS 280	30	75	196.5	60	130	-	3	8.200	123.00	246.00	782.00	22517	
UCWS 295	40	95	243	65	160	-	3	13.400	201.00	-	1279.00	51222	
UCWS 2955	50	100	135, 140, 180, 250	243	65	160	-	3	22.400	336.00	-	2132.00	85428
UCWS 300	50	110		265	80	180	-	3	31.900	478.50	-	3047.00	126395
UCWS 350	50	115		318	90	200	-	3	45.000	675.00	-	4308.00	183633

\*\* Maximum permissible Mis-alignments : Angular 1°, parallel 0.4 mm and axial 3 mm (Initial alignment must be 25% of maximum)